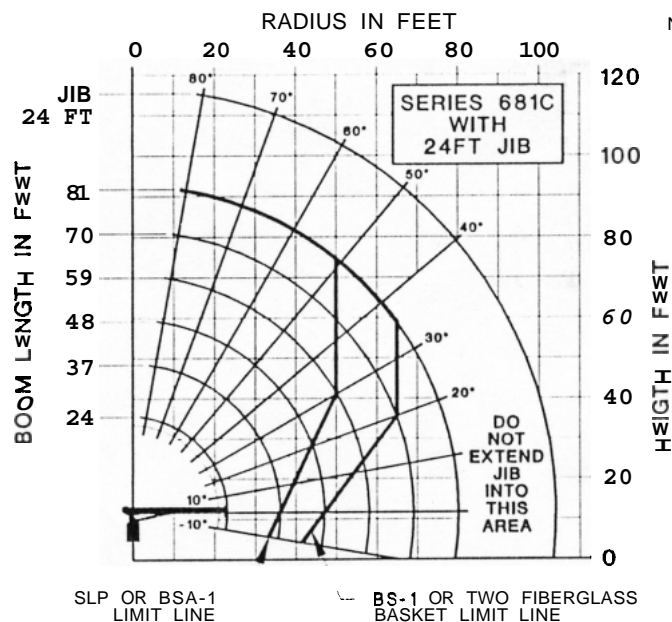


National Series 600C

Load Rating Charts (continued)



NOTE:

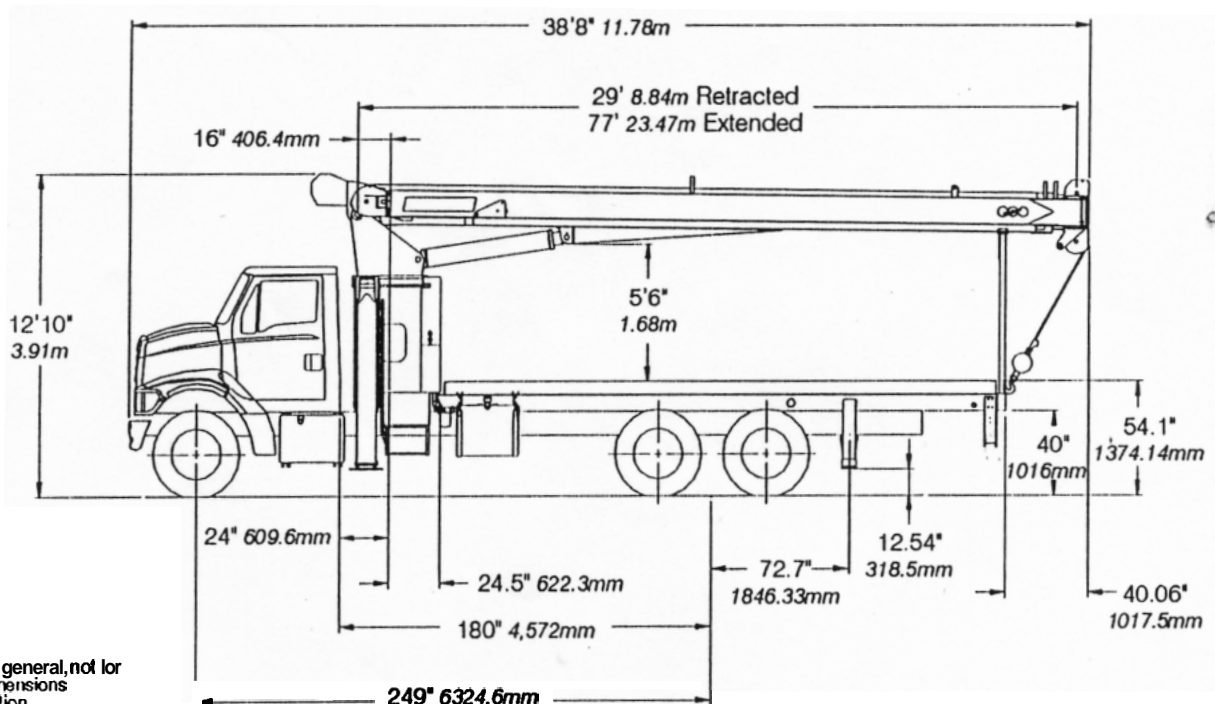
1. OPERATE WITH JIB BY RADIUS. WHEN MAIN BOOM IS FULLY EXTENDED. IF NECESSARY INCREASE BOOM ANGLE TO MAINTAIN LOADED RADIUS.
2. OPERATE WITH JIB BY BOOM ANGLE WHEN MAIN BOOM IS NOT FULLY EXTENDED. DO NOT EXCEED RATED JIB CAPACITIES AT ANY REDUCED BOOM LENGTHS.

JIB LOAD RATINGS

LOAD RADIUS (FEET)	LOADED BOOM ANGLE	24FT JIB (LBS)
20	78	3,200
25	77.5	2,800
30	74.5	2,500
35	72	2,200
40	69	1,900
45	66	1,600
50	63	1,400
55	60	1,200
60	57	1,000
65	53.5	800
70	50	700
75	46	600

BOOM LOAD RATINGS

LOAD RADIUS (FEET)	LOADED BOOM ANGLE	24FT BOOM (LBS)	LOADED BOOM ANGLE	37FT BOOM (LBS)	LOADED BOOM ANGLE	48FT BOOM (LBS)	LOADED BOOM ANGLE	59FT BOOM (LBS)	LOADED BOOM ANGLE	70FT BOOM (LBS)	LOADED BOOM ANGLE	81FT BOOM (LBS)	LOADLINE EQUIPMENT DEDUCT
4.5	78.5	34,000											
8	69.5	22,050	77.5	19,350									
10	64	18,250	74.5	15,850	78.5	14,350							
12	58	15,650	71	13,800	76	12,150	79	10,950					
14	52	13,850	67.5	11,900	73.5	10,650	77	9,550	79.5	8,800			DOWNHAUL WEIGHT = 150 ONE SHEAVE BLOCK = 200 TWO SHEAVE BLOCK = 355
16	45.5	12,350	64	10,800	71	9,450	75	8,500	78	7,800			
20	28.5	9,750	56.5	8,700	85.5	7,750	71	7,050	74.5	8,400	77	8,150	
25			47	7,250	59	8,400	68	5,700	70.5	5,200	73.5	4,950	
30			35	5,950	51.5	5,350	60.5	4,800	68	4,350	69.5	4,100	
35			15	4,500	43.5	4,550	54.5	4,100	61	3,750	65.5	3,500	
40					33	3,850	48	3,550	56.5	3,250	61.5	3,050	
45					18	3,100	40.5	3,100	51	2,850	57.5	2,650	
50							32	2,875	45.5	2,500	53	2,350	
55							20	2,200	39	2,200	48	2,050	
60									31.5	1,850	43	1,800	
65									21.5	1,550	37.5	1,550	
70											30.5	1,300	
75											22	1,050	
80											3.5	550	
0	0	8,400	0	3,450	0	2,150	0	1,350	0	800			



These dimensions are general, not for engineering. Some dimensions depend on truck selection.

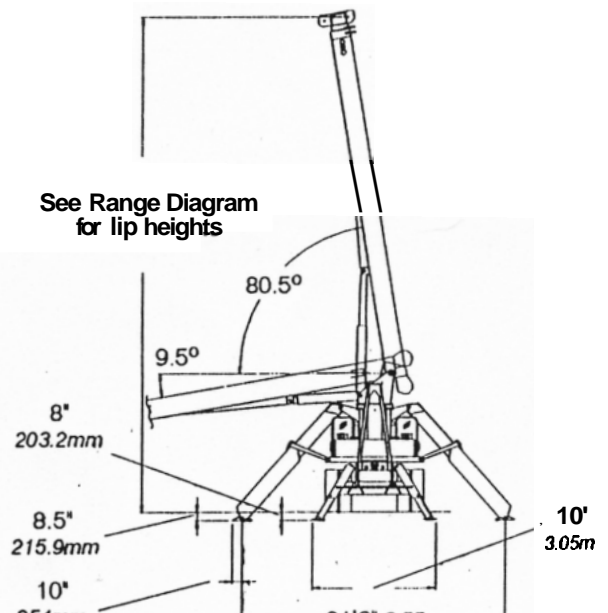
TRUCK CHASSIS DATA

Minimum Requirements

Some configurations and options may increase requirements.

Wheelbase	249 in	6,324.6mm
Cab to Axle	180 in	4,572mm
Frame Section Modulus	18 in ³	3.295cc
Frame Section Modulus	50,000 psi	344,750 kPa
Frame Section Modulus	15.9 in ³	260cc
Frame Section Modulus	110,000 psi	758,450 kPa
Nominal Frame Width	34 in	864mm
Front Axle Gross Weight Rating	16,000 lb	7,257 kg
Rear Axle Gross Weight Rating	40,000 lb	18,744 kg

See Range Diagram for lip heights



ACTUAL GROSS

WT - 35,960 lbs.